

AKOR ST HR

Balanced-airflow for single dwelling houses, with crossflow heat exchanger. It guarantees continuous air replacement in single dwelling houses up to 92% of efficiency.

It connects, via ducting, to extraction outlets in each of the 'wet' rooms. The fresh air that has been pre heated enters the rooms through supply air vents. Equipped with 2 centrifugal fans (a supply and an extract fan), each with a 230V-50Hz motor, Class B, 2-speed, designed for continuous operation, and terminal housing to connect the power supply cable.



**Specific applications**



Single dwellings



Heat recovery unit



**Easy maintenance**  
and filter cleaning.



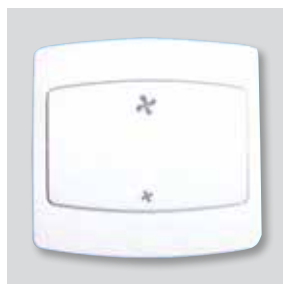
**Efficient counter flow heat exchanger**  
High efficient counter flow heat exchanger, manufactures from polypropylene plates.



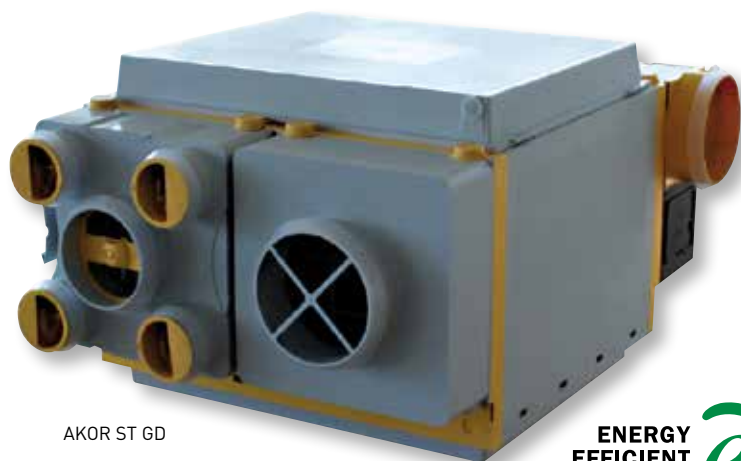
**Drain**  
Permanent drain to evacuate condensation water.



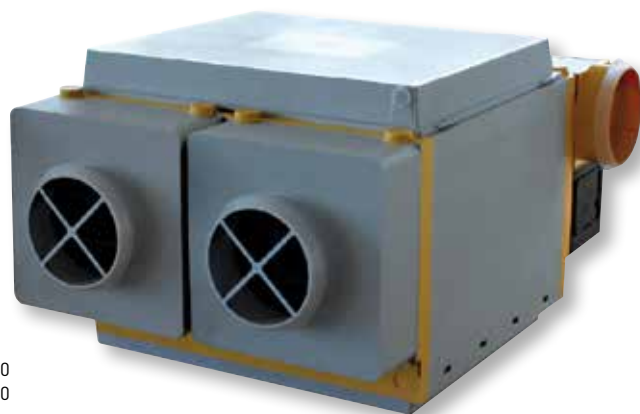
**Integrated rubber seals**  
Circular connection flange with Integrated rubber seals.



**Switch**  
Incorporated switch (Extract/Input).  
2 extract positions with stop.  
2 input positions with stop.



AKOR ST GD



AKOR ST D150  
 AKOR ST GD D150

Balanced-airflow for single dwelling houses, with crossflow heat exchanger. It guarantees continuous air replacement in single dwelling houses up to 60% of efficiency.

It connects, via ducting, to extraction outlets in each of the 'wet' rooms.

The fresh air that has been pre heated enters the rooms through supply air vents. Equipped with 2 centrifugal fans (a supply and an extract fan), each with a 230V-50Hz motor, Class B, 2-speed, designed for continuous operation, and terminal housing to connect the power supply cable.

**Specific applications**



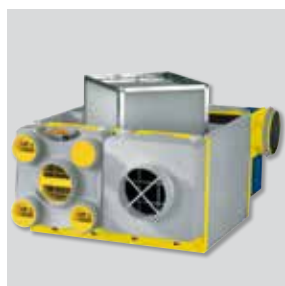
Single dwellings



Heat recovery unit



**Easy maintenance**  
 and filter cleaning.



**Efficient cross flow heat exchanger**  
 High efficient cross flow heat exchanger, manufactures from polypropylene plates.



**Drain**  
 Permanent drain to evacuate condensation water.



**Integrated rubber seals**  
 Circular connection flange with Integrated rubber seals.



**Switch**  
 Incorporated switch (Extract/Input).  
 2 extract positions with stop.  
 2 input positions with stop.

### REFERENCE

<b>A</b>	<b>K</b>	<b>O</b>	<b>R</b>	<b>-</b>	<b>S</b>	<b>T</b>	<b>G</b>	<b>D</b>	<b>D</b>	<b>1</b>	<b>5</b>	<b>0</b>
1						2		3				

- 1 - **AKOR ST**: Serie.
- 2 - **GD**: High power fan.
- HR**: High efficiency core.
- 3 - **D150**: Connection diameter.

### TECHNICAL CHARACTERISTICS

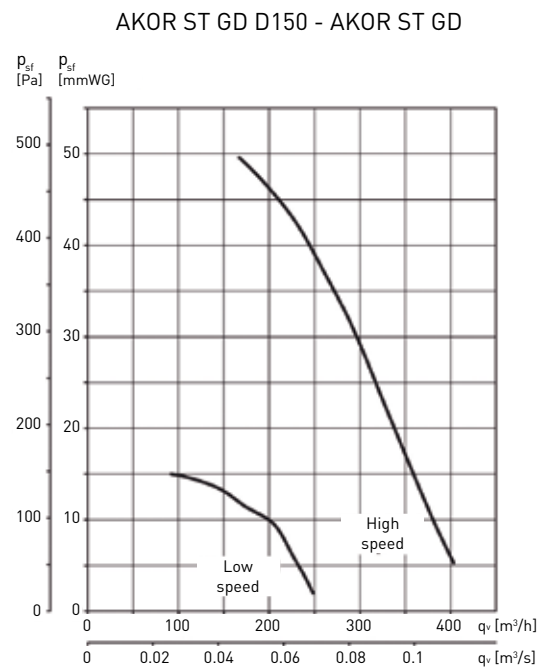
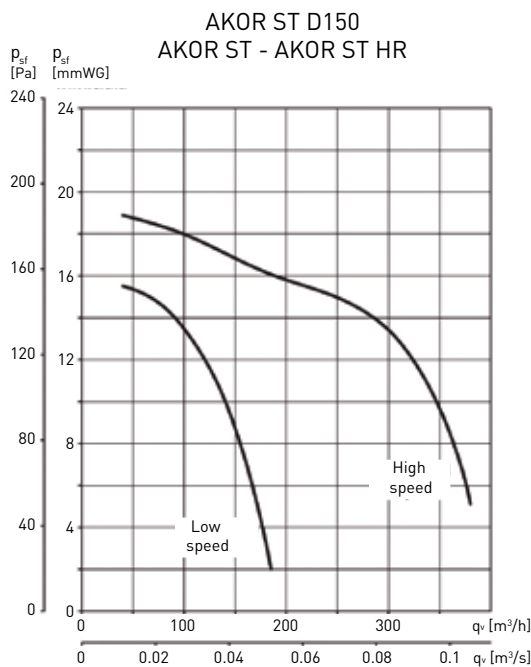
Before installation check that the product electrical characteristics listed on the data plate label (voltage, power, frequency, etc.) match those of the intended electrical supply.

Model	Voltage (V)	Power absorbed at free discharge (Maximum) (W)	Configuration	Weight (kg)	Wiring diagram* (n°)
AKOR ST D150	230	132	1 inlet bellmouth 150 mm	15	48
AKOR ST GD D150	230	270	1 inlet bellmouth 150 mm	16	48
AKOR ST	230	132	4 inlet bellmouth 80 mm 1 inlet bellmouth 125 mm	15	48
AKOR ST GD	230	270	4 inlet bellmouth 80 mm 1 inlet bellmouth 125 mm	16	48
AKOR ST HR	230	132	4 inlet bellmouth de 80 mm 1 inlet bellmouth 125 mm	16	48

\* See section of Wiring Diagrams.

### PERFORMANCE CURVES

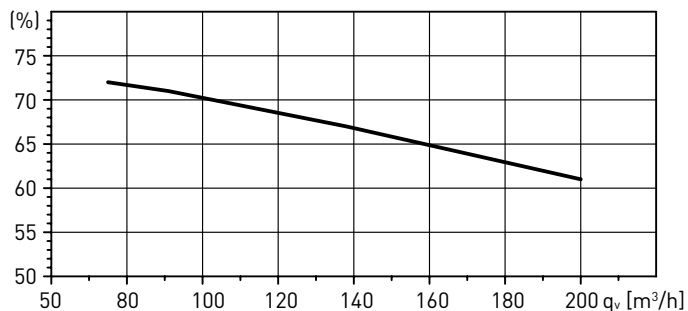
The curves correspond to each of the 2 fans that each AKOR model incorporates.



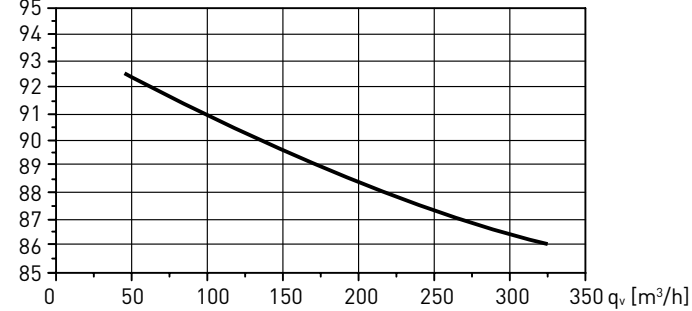
**EFFICIENCY CURVE**

Outdoor temperature: 5°C.  
 Outdoor relative humidity: no significant.  
 Indoor temperature: 25°C.  
 Indoor relative humidity: 30%.

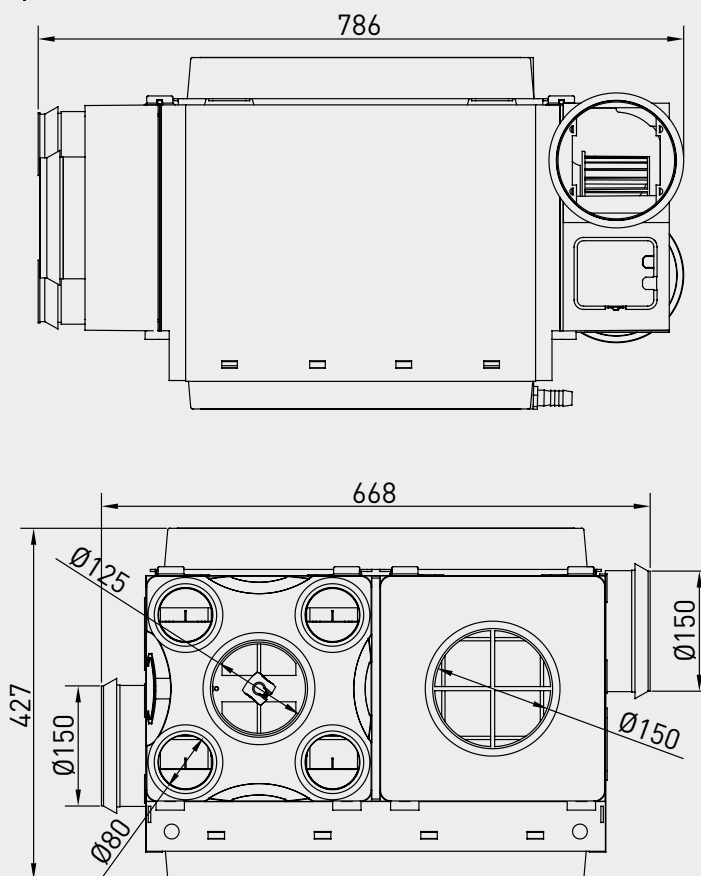
AKOR ST D150 - AKOR ST GD D150  
 AKOR ST - AKOR ST GD



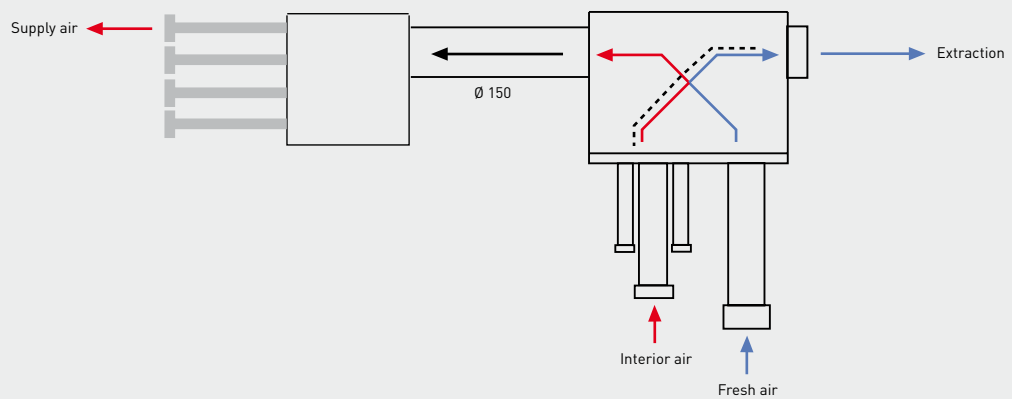
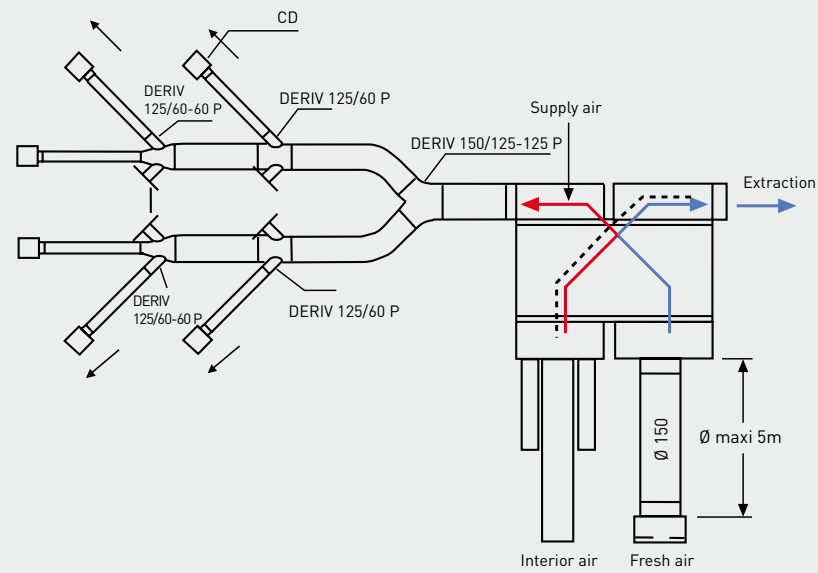
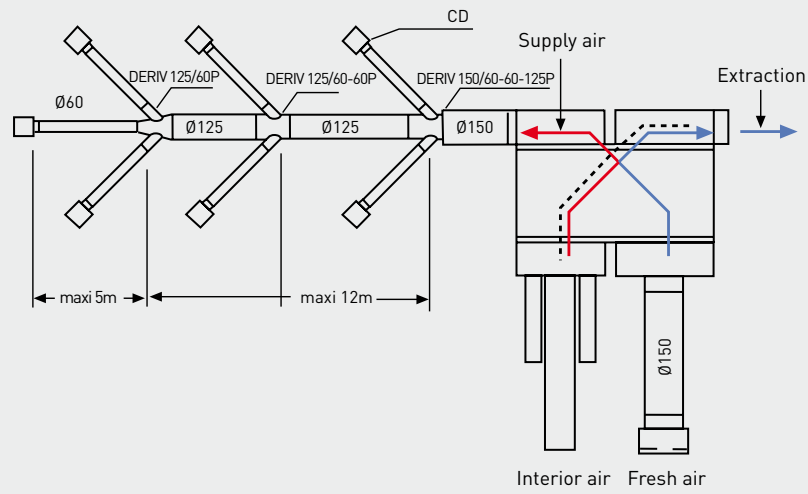
AKOR ST HR



**DIMENSIONS (mm)**



**INSTALLATION EXAMPLES**



**ACCESSORIES**



**ABE D.05  
Defrosting unit**  
 Prevents the formation of ice from the condensation on the interchanger plates in the air extract. Made from galvanized steel plate and supplied with polyethylene clips. It has a heat resistance of 500W and control thermostats.



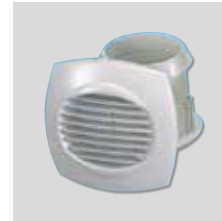
**ABE/CORIS  
Heating unit**  
 Allows the temperature of the blown air to be increased. It has a 500W power heating element and control thermostats.



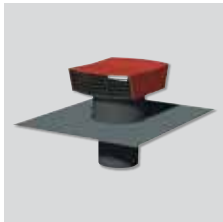
**TAT  
Air inlet for false ceiling mounting**



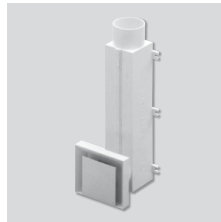
**TAP  
Air inlet wallmounted**



**BOA/BOAC  
Inlet valves**  
 BOA 80/125.  
 BOAC 80/125.



**CT  
Plastic roof terminal cowl**



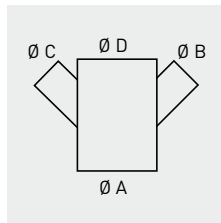
**CD  
Intake grille**  
 Designed to introduce air into individual houses. It can be installed on a wall, ceiling or on straight or inclined ceiling tiles. Diameter 60 mm.



**Plenum AKOR**  
 10 inlet spigots in Ø60 mm.  
 Outlet spigot in Ø150 mm. 5 covers.



**DERIV  
Duct fittings.**



Model	Ø A (mm)	Ø B (mm)	Ø C (mm)	Ø D (mm)
DERIV 80-80 P	80	80	80	
DERIV 125-60-60-125 P	125	60	60	125
DERIV 125-60-60-125 P	125	60	60	60
DERIV 150-125-125 P	150	125	125	
DERIV 150-60-60-125 P	150	60	60	125